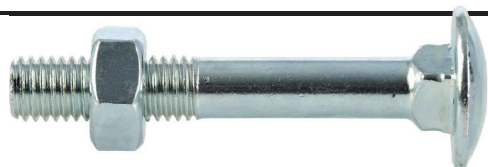


DIN 603



Cincado

DIN 603
TORNILLO + TUERCA

Medida	M-6	M-8	M-10
40 mm	F052460306040	F052460308040	
50 mm	F052460306050	F052460308050	F052460310050
60 mm	F052460306060	F052460308060	F052460310060
70 mm	F052460306070	F052460308070	F052460310070
80 mm	F052460306080	F052460308080	F052460310080
90 mm	F052460306090		F052460310090
100 mm	F052460306100	F052460308100	F052460310100
110 mm		F052460308110	F052460310110
120 mm		F052460308120	F052460310120
130 mm			F052460310130
150 mm			F052460310150

DIN-965



Cincado

DIN 965
PH

Medida	M-5	M-6
12 mm		F0542M612
60 mm	F0542M560	F0542M660
70 mm	F0542M570	F0542M670
80 mm	F0542M580	F0542M680

HEMBRILLA CERRADA



Cincado

DIN 965
PH

M-4	F070200420004
M-5	F070200420005
M-6	F070200420006
M-8	F070200420008
M-10	F070200420010
M-12	F070200420012

DIN 985



Cincado

DIN 985

M-6	F0619985CA6
M-8	F0619985CA8
M-10	F0619985CA10

DIN 934



Cincado

DIN 934

M-3	F0619934C03
M-4	F0619934C04
M-5	F0619934C05
M-6	F0619934C06
M-8	F0619934C08
M-10	F0619934C10

DIN 1587



Latón
Cincado

DIN 1587

	Cincado	Latón
M-6	F06191587Z6	F06191587L6
M-8	F06191587Z8	F06191587L8
M-10	F06191587I10	

DIN 975



Cincado

DIN 975
1 mt.

M-4	F0638M04
M-5	F0638M05
M-6	F0638M06
M-8	F0638M08
M-10	F0638M10

DIN 125

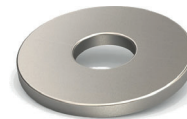


Cincado

DIN 125

M-3	F0619125C03
M-4	F0619125C04
M-5	F0619125C05
M-6	F0619125C06
M-8	F0619125C08
M-10	F0619125C10

DIN 9021



Cincado

DIN 9021

M-4	F06199021C04
M-5	F06199021C05
M-6	F06199021C06
M-8	F06199021C08
M-10	F06199021C10