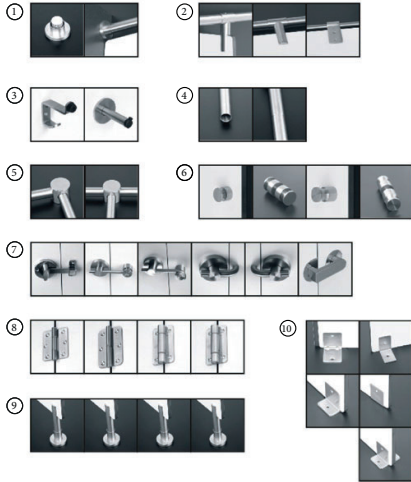
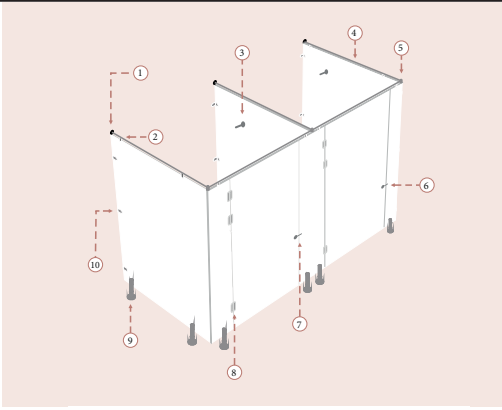
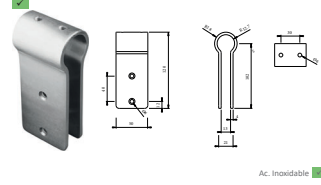


VISION GENERAL HERRAJE JNF



SM.002 SOPORTE PINZA

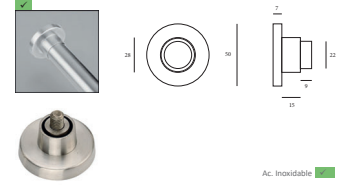


Ac. Inoxidable

SM.002
SOPORTE PINZA

Ac. Inoxidable	F7563002
----------------	----------

SM.011 UNIÓN TUBO

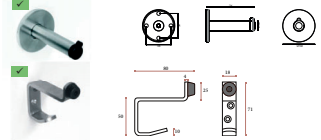


Ac. Inoxidable

SM.011
UNIÓN TUBO

Ac. Inoxidable	F7563011
----------------	----------

TOPE Y COLGADOR

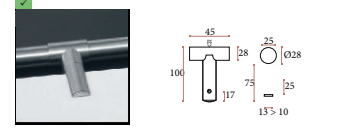


Ac. Inoxidable

TOPES Y COLGADORES

Tope recto	F7563008
Tope doble colgador	F7563009

SM.012.180 SOPORTE PANEL

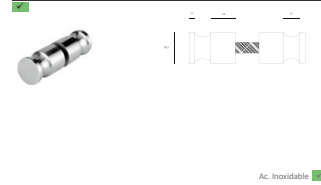


Ac. Inoxidable

SM.012.180
SOPORTE PANEL

Ac. Inoxidable	F7563012
----------------	----------

POMO

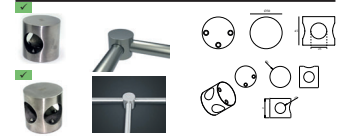


Ac. Inoxidable

POMO

Ac. Inoxidable	F7563020
----------------	----------

CONECTORES TUBO

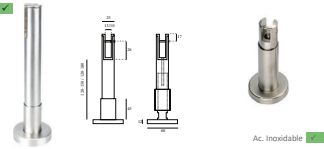


Ac. Inoxidable

CONECTORES
TUBO

2 Entradas 90°	F7563032
3 Entradas	F7563033

SM.025-017-017XL

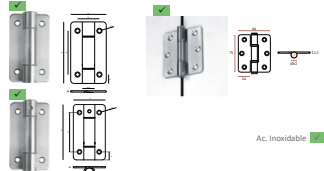


Ac. Inoxidable

PIE REGULABLE

120-150 mm (ECO)	F7563025
120-150 mm	F7563017
120-180 mm	F7563018

BISAGRAS

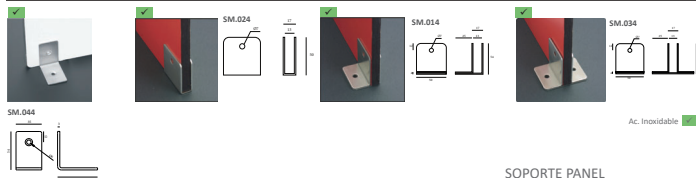


Ac. Inoxidable

BISAGRAS

S/J. Muelle	F7563003
Muelle	F7563004
Plana	F7563005

SOPORTES PANEL

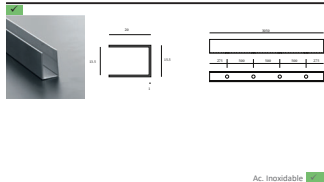


Ac. Inoxidable

SOPORTE PANEL

"I" SM.004	F7563044
"U" SM.024	F7563024
"P" SM.014	F7563014
"T" SM.034	F7563034

SM.101

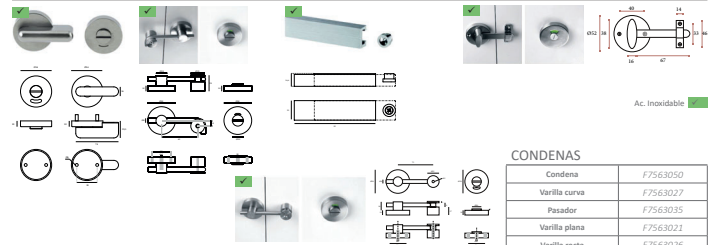


Ac. Inoxidable

PERFIL PARA
PANEL

3050 mm	F7563101
---------	----------

CONDENAS

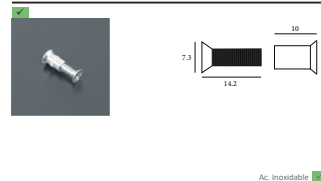


Ac. Inoxidable

CONDENAS

Condensa	F7563050
Varilla curva	F7563027
Pasador	F7563035
Varilla plana	F7563021
Varilla recta	F7563026

TORNILLOS

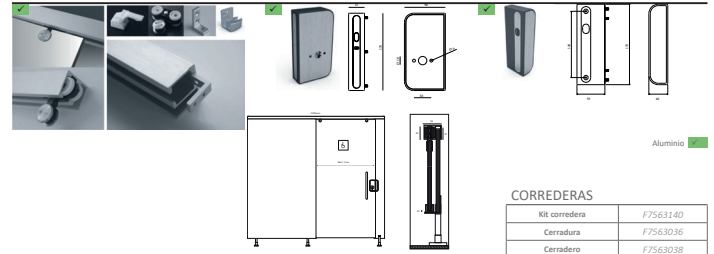


Ac. Inoxidable

TORNILLOS

Ac. Inoxidable	F7563040
----------------	----------

CORREDERA



Aluminio

CORREDERAS

Kit corredera	F7563140
Cerradura	F7563036
Cerradero	F7563038